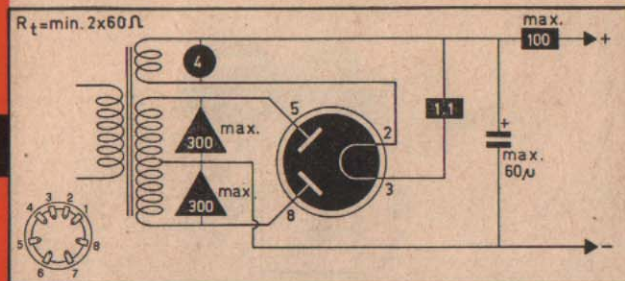
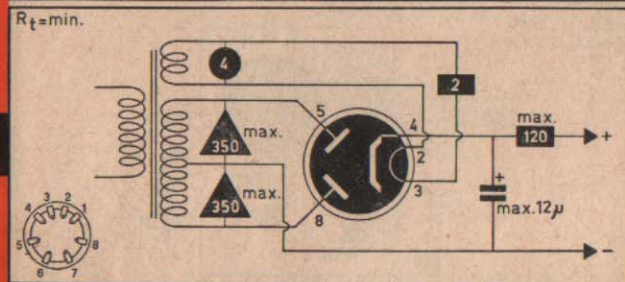


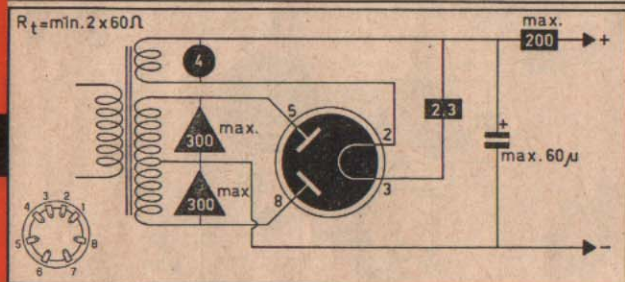
AZ1



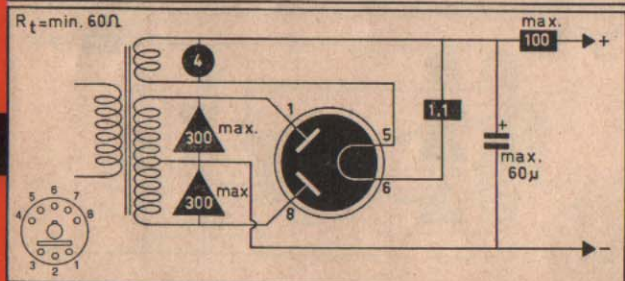
AZ3



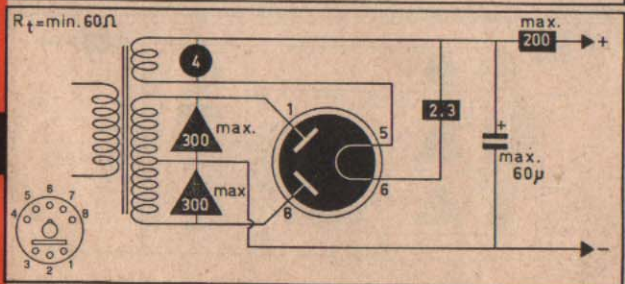
AZ4



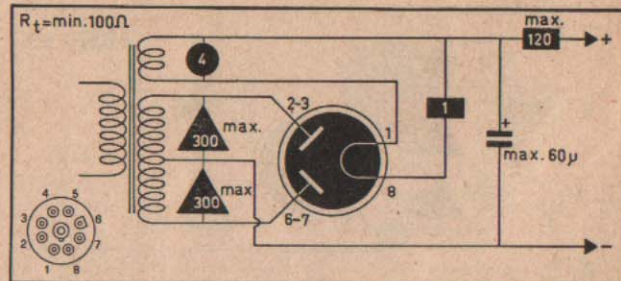
AZ11



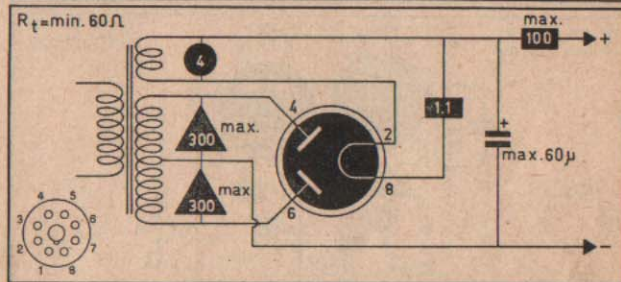
AZ12



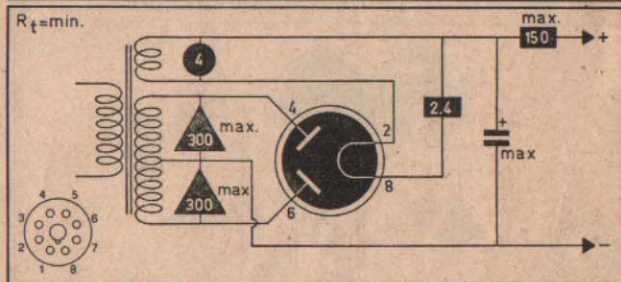
AZ21



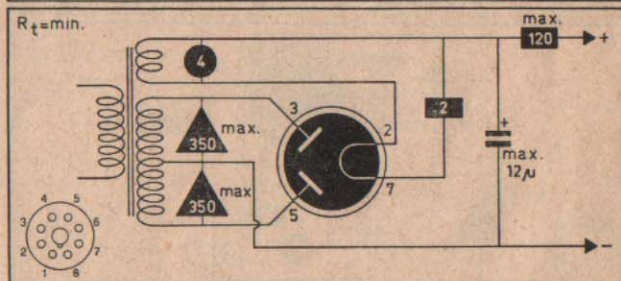
AZ31



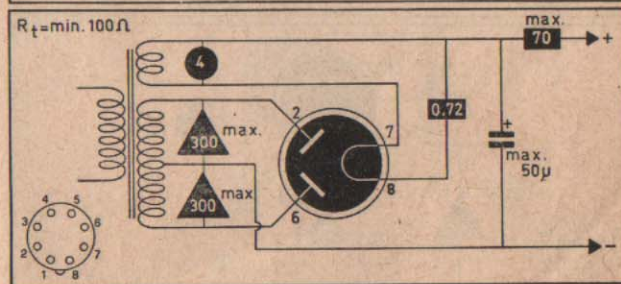
AZ32

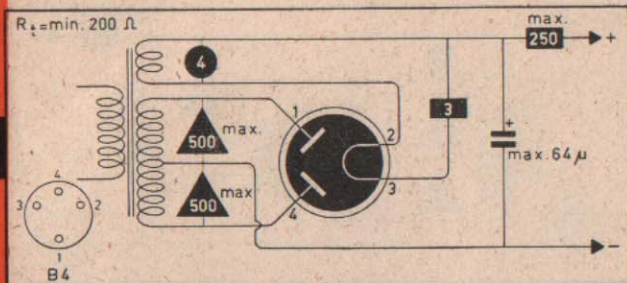
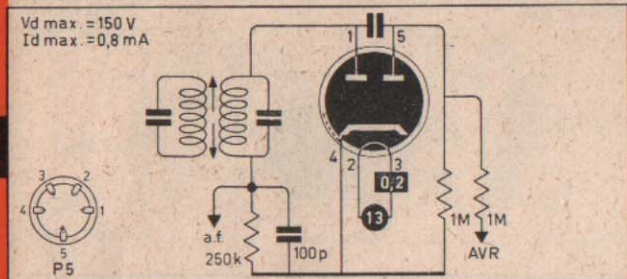
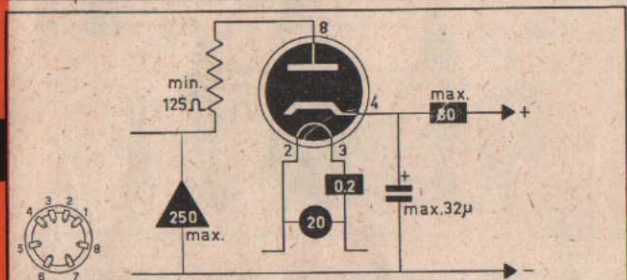
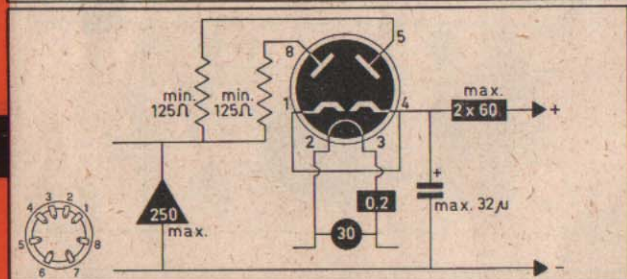
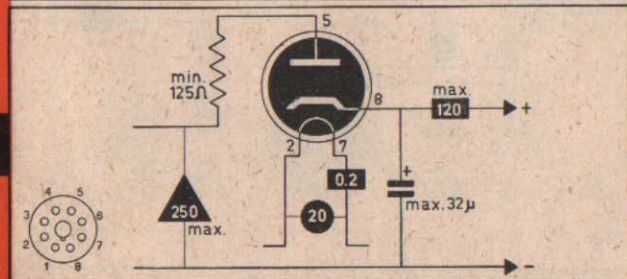
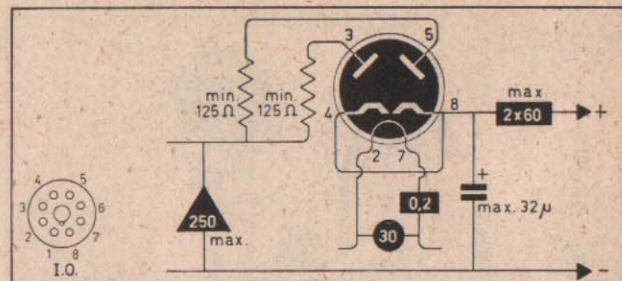
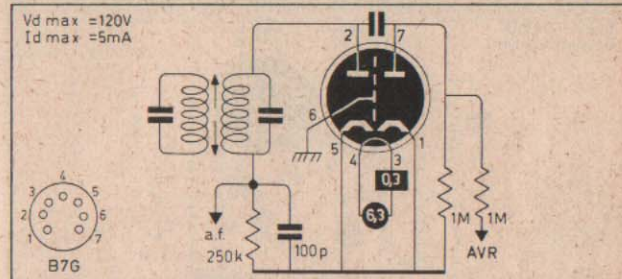
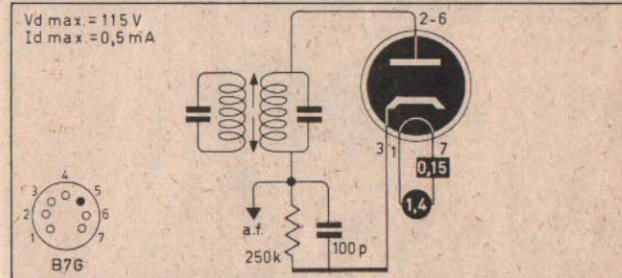
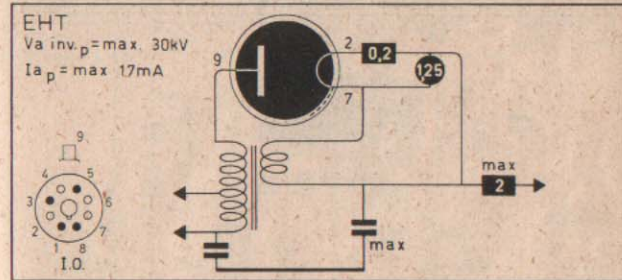
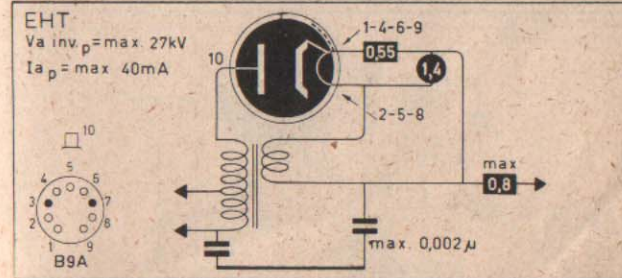


AZ33

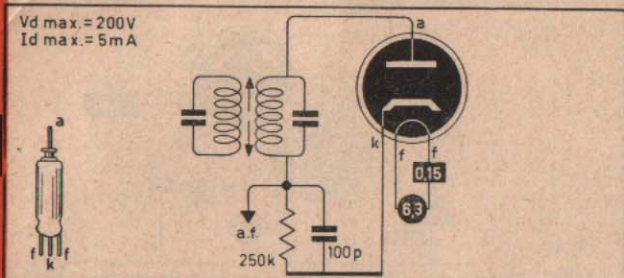


AZ41

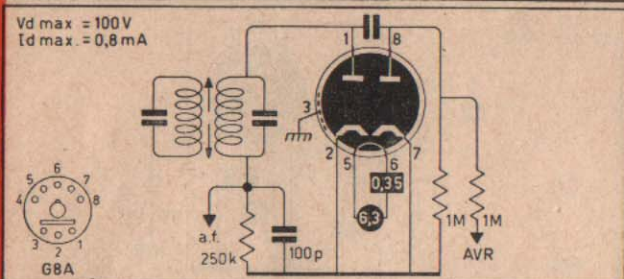


AZ50**CB2****CY1****CY2****CY31****CY32****D77****DA90****DY30****DY86**
DY87**DY80 supplement**

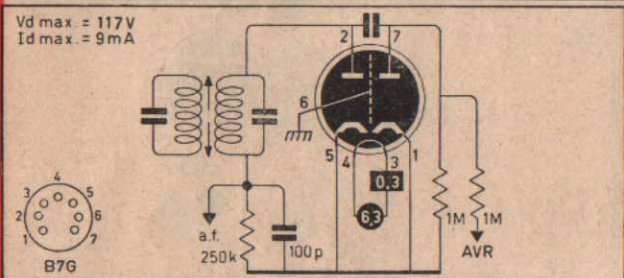
EA50



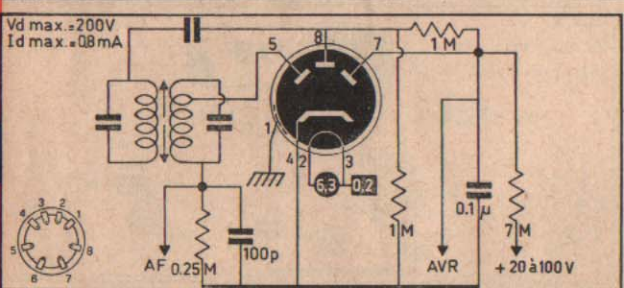
EAA11



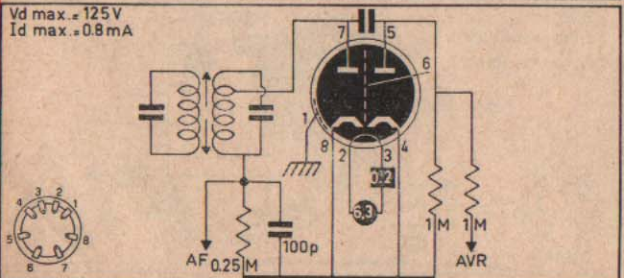
EAA91



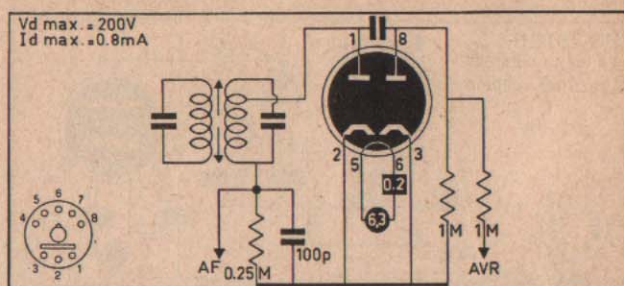
EAB1



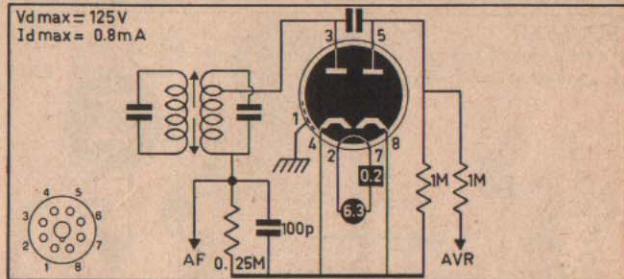
EB4



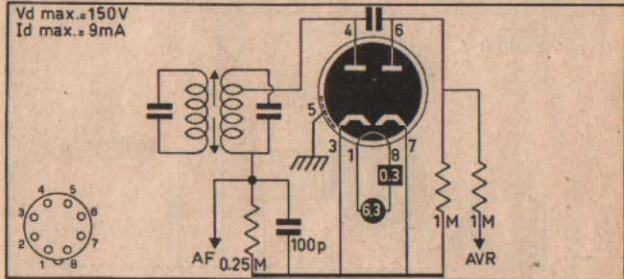
EB11



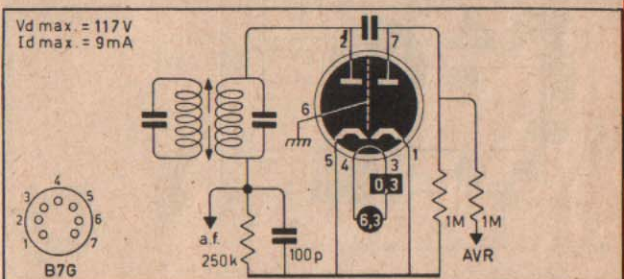
EB34



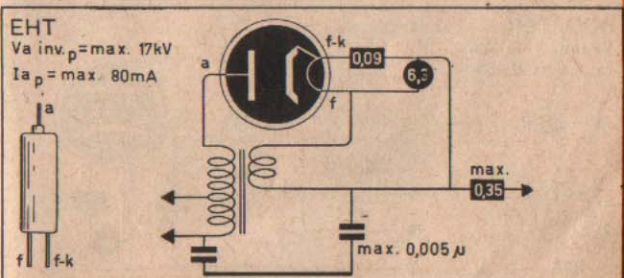
EB41



EB91

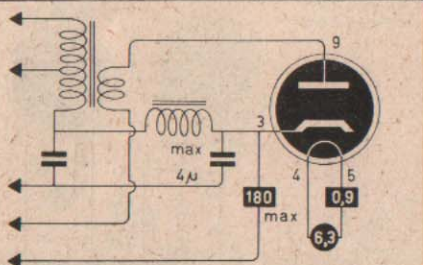


EY51



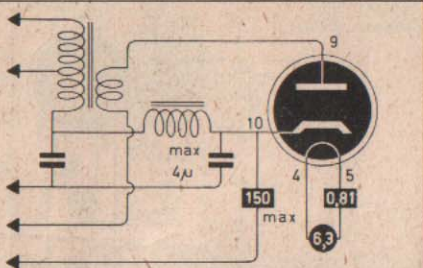
EY80

BOOSTER
Va inv p = max 4kV
Ia p = max 400mA

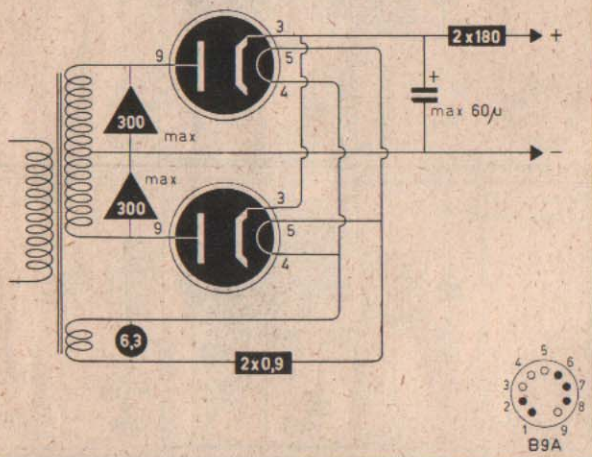


EY81

BOOSTER
Va inv p = max 5.6kV
Ia p = max 450mA



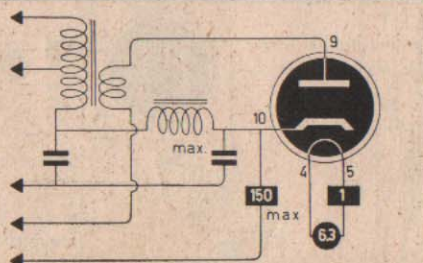
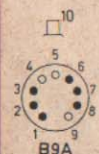
Rt = min 2 x 110 Ω



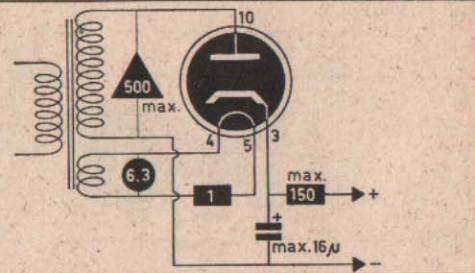
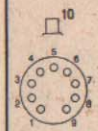
EY82

EY83

BOOSTER
Va inv p = max 5kV
Ia p = max 450mA

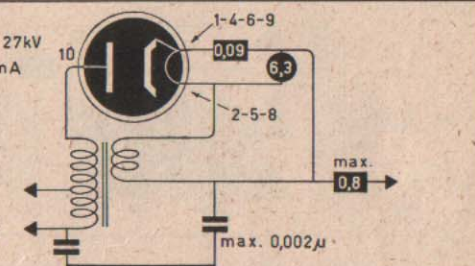
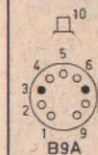


Rt = min. 150Ω



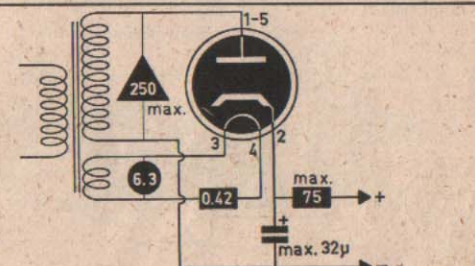
EY84

EHT
Va inv p = max. 27kV
Ia p = max. 40mA



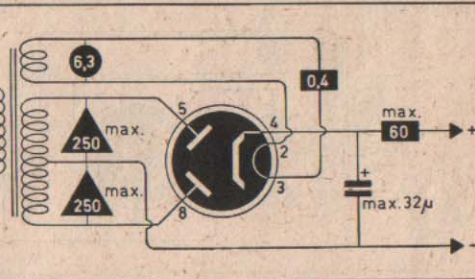
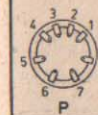
EY86
EY87

Rt = min. 100Ω



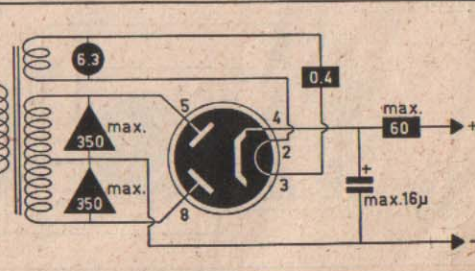
EY91

Rt = min. 600 Ω



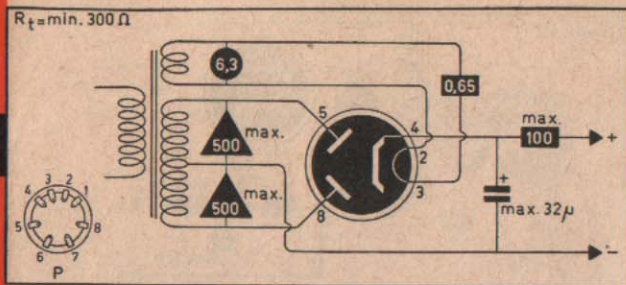
EZ1

Rt = min. 500 Ω

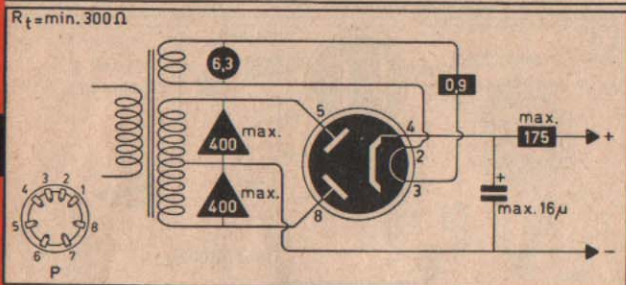


EZ2

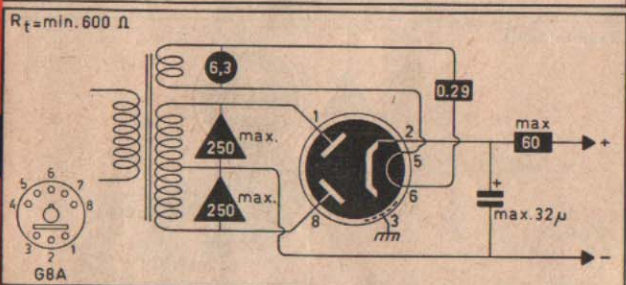
EZ3



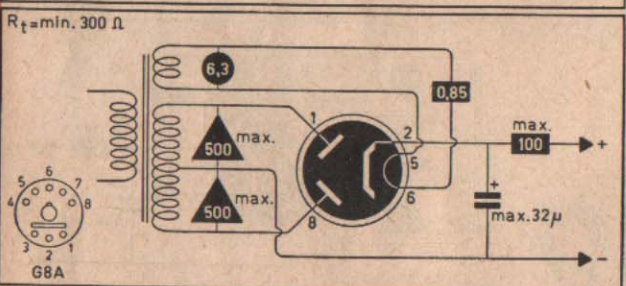
EZ4



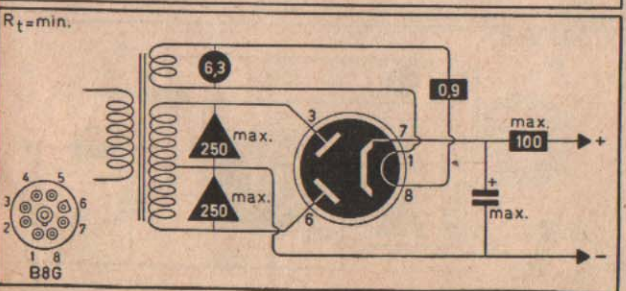
EZ11



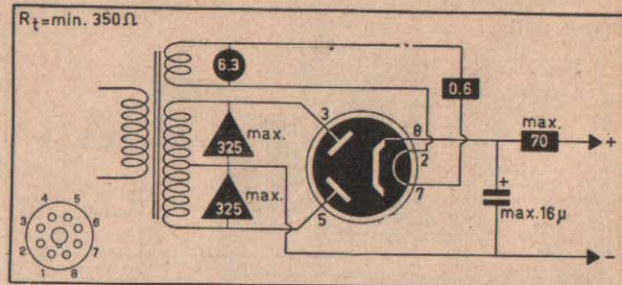
EZ12



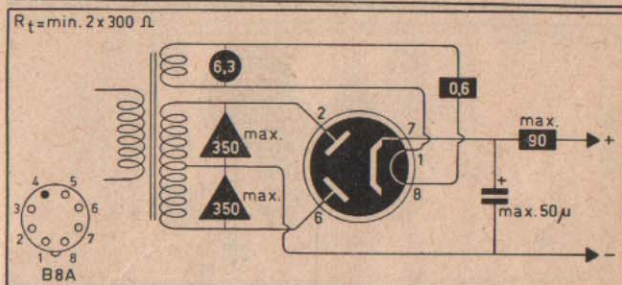
EZ22



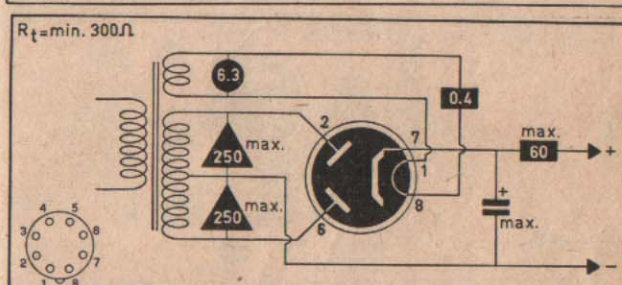
EZ35



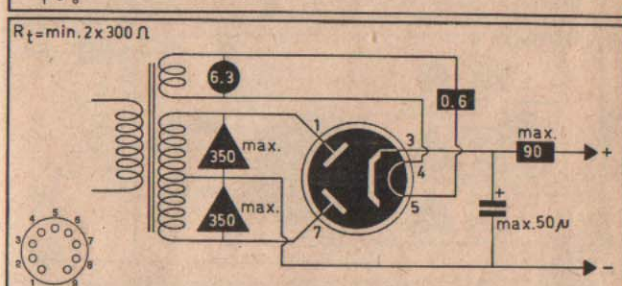
EZ40



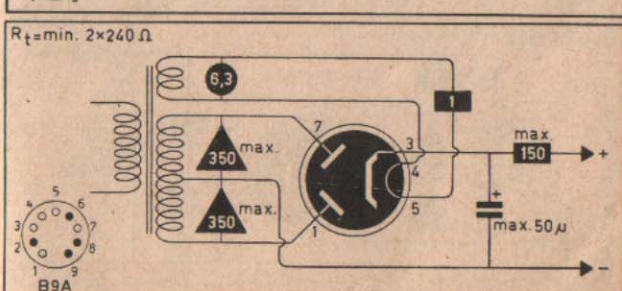
EZ41



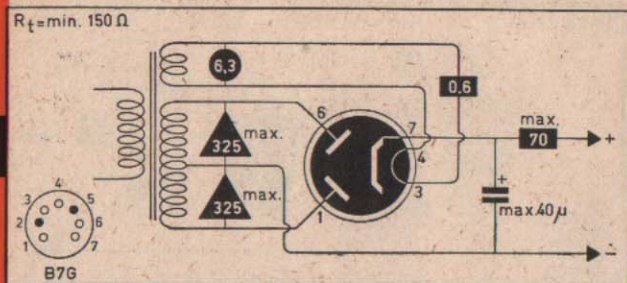
EZ80



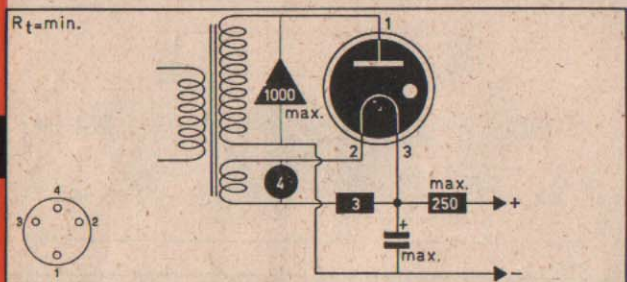
EZ81



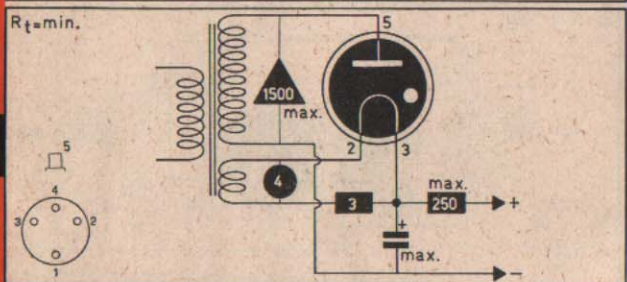
EZ90



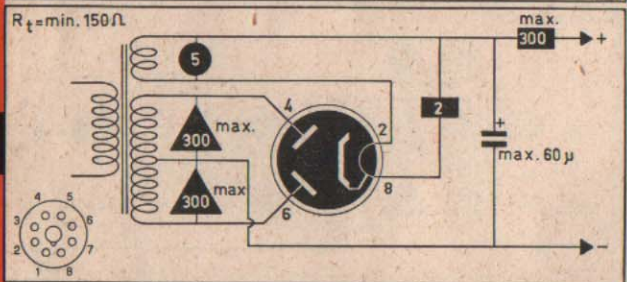
GU1



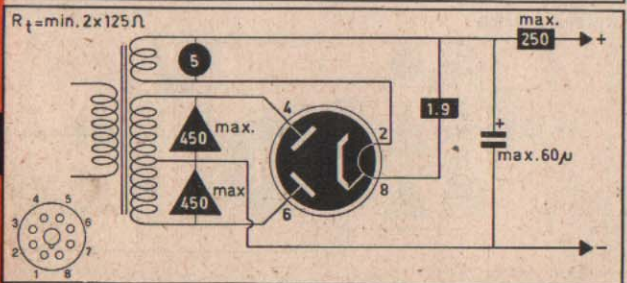
GU5



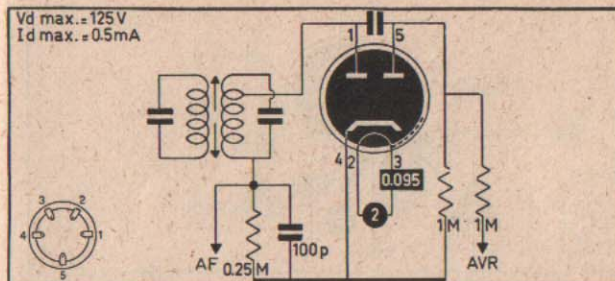
GZ32



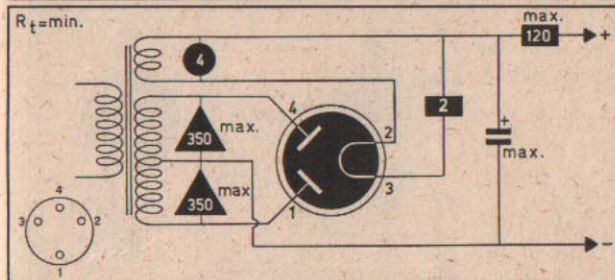
GZ34



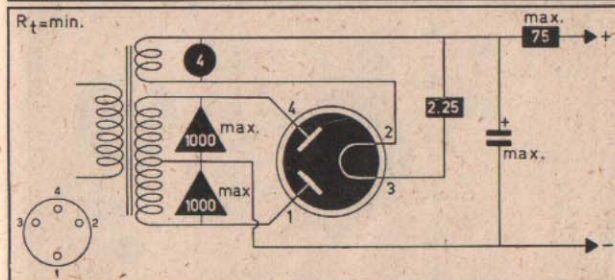
70



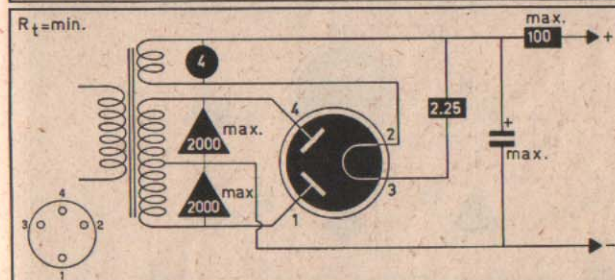
KB2



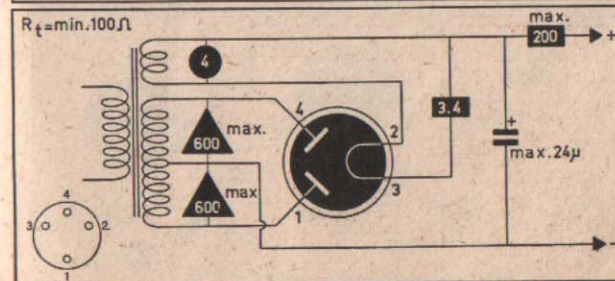
PV4



PV75/1000



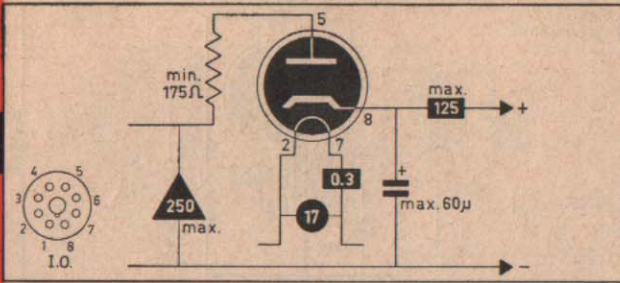
PV100/2000



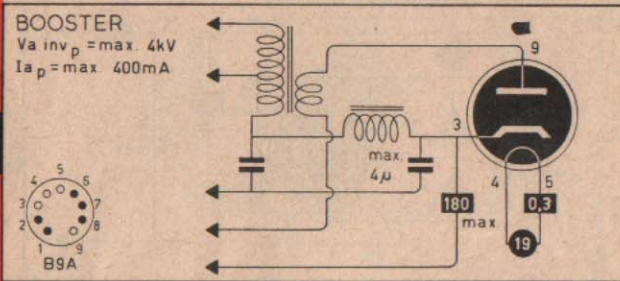
PV200/600

71

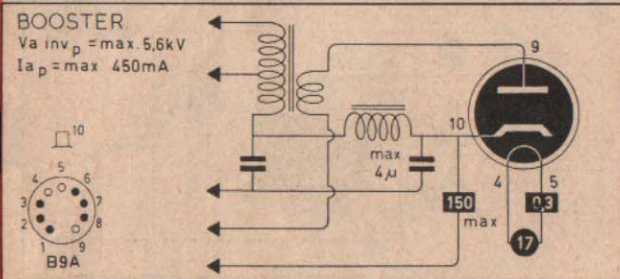
PY31



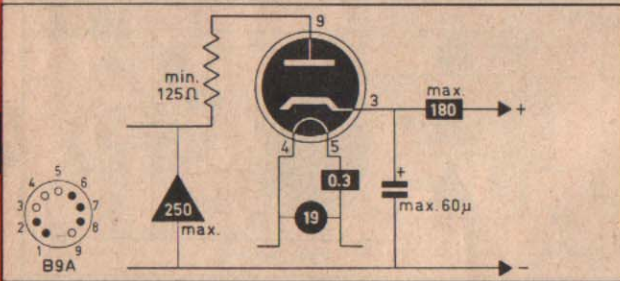
PY80



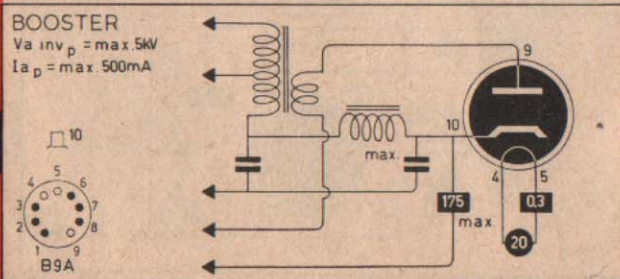
PY81



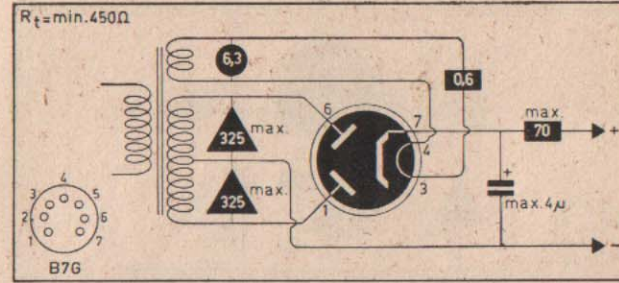
PY82



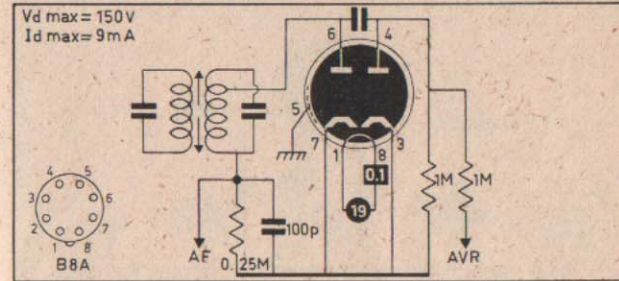
PY83



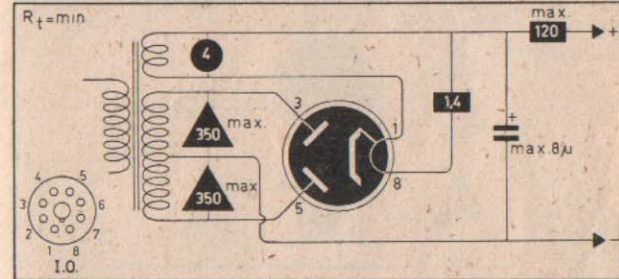
U78



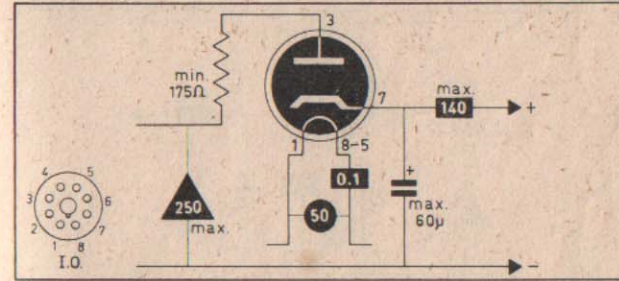
UB41



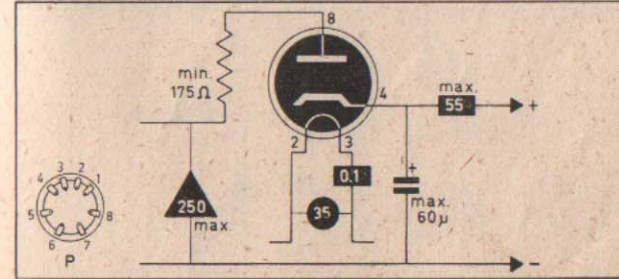
UU6



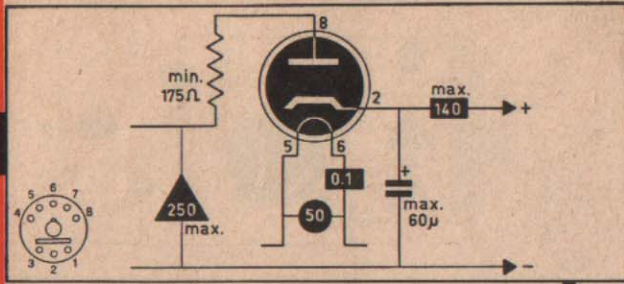
UY1(N)



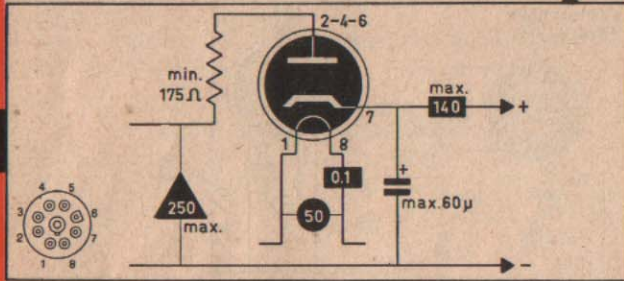
UY4



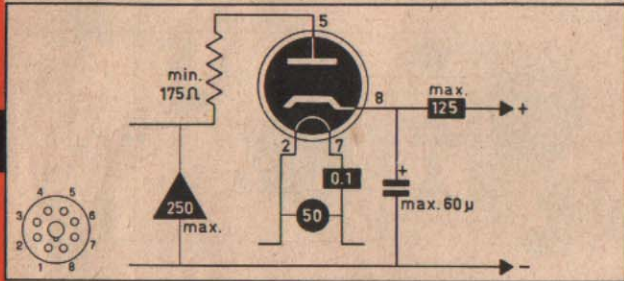
UY11



UY21

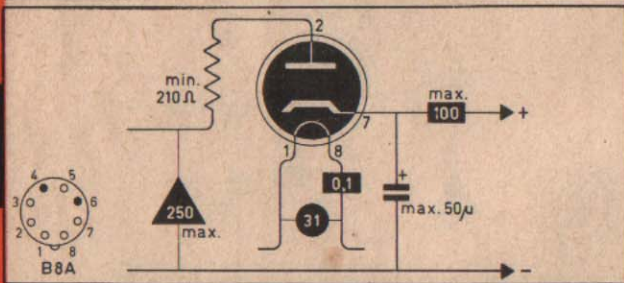


UY31

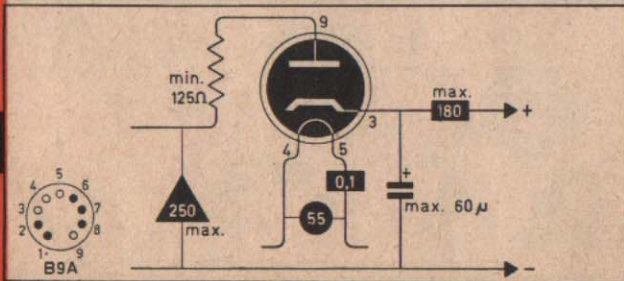


UY41

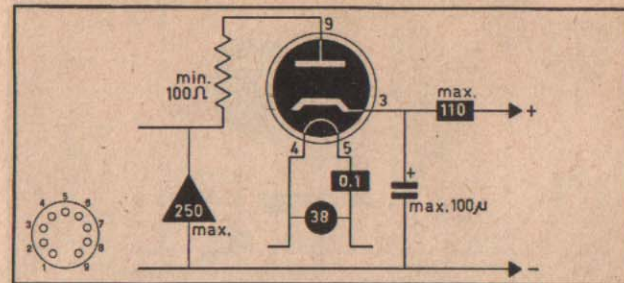
UY42



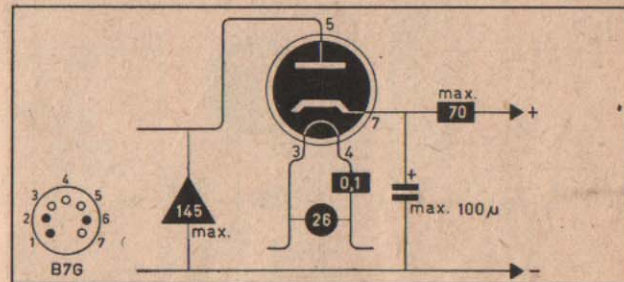
UY82



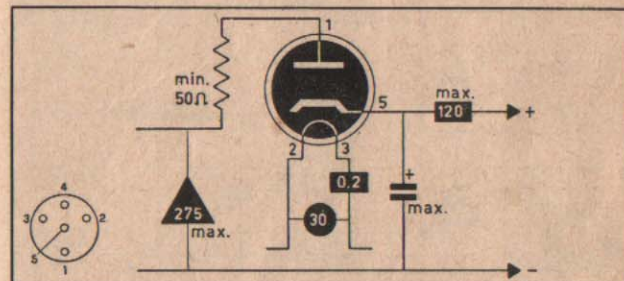
UY85



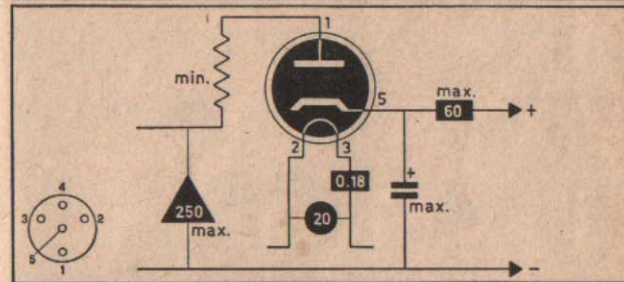
UY92



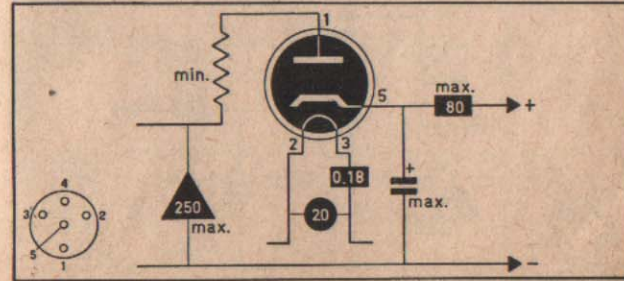
V30



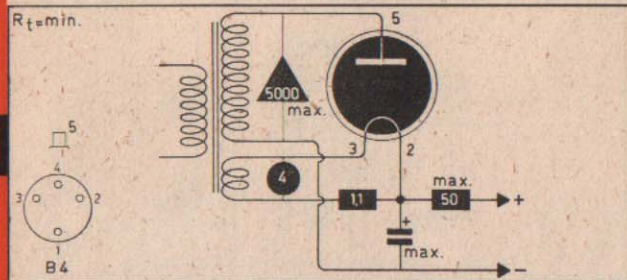
V2018



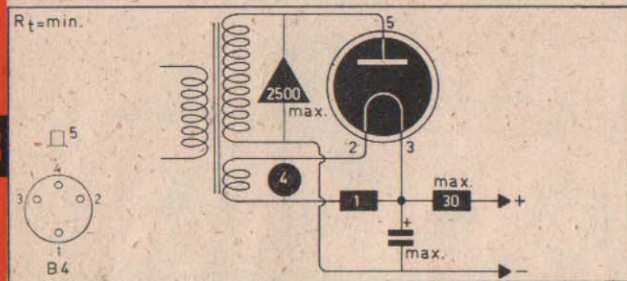
V2118



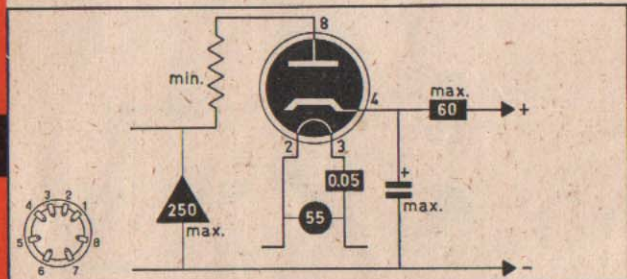
VU111



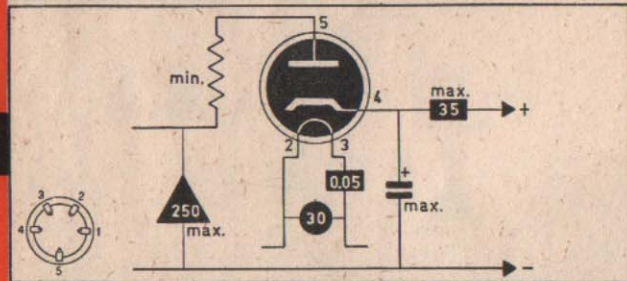
VU113



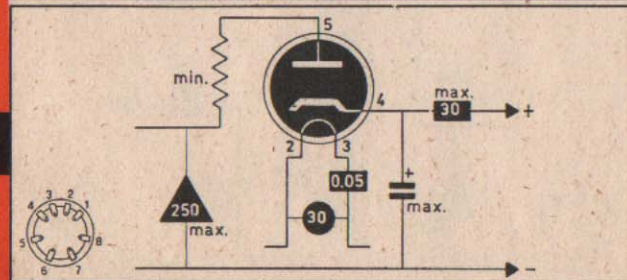
VY1



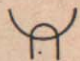

VY2





VY2(N)





1A3	DA90	CV753	-	-
1B3GT	DY30	CV1830	-	-
1R4	-	CV2709	-	-
1S2	DY86/87	-	-	-
1V	-	CV1999	-	-
-2B35-	EA50	-	-	-
2X2A	-	CV597	-	-
3AL5	-	-	6AL5 12AL5 EAA91 EB91	-
5AZ4	-	-	-	5Y3 5Y4 80
5R4	-	CV2835	-	-
5R4GY	-	CV717	-	-
5R4WGA	-	CV4026	-	-
5T4	-	CV1846	-	-
5U4	-	CV1071	-	5X4 5Z3
5U4G	-	CV575 CV1575 VT244 x/	-	-
5U4GT	-	CV841	-	-
5V4	-	-	-	83V
5V4G	-	CV729 VT206 x/	-	-
5W4	-	CV503 CV1849 VT97 x/	-	-
5W4G	-	CV842	-	-
5X4	-	-	-	5U4 5Z3
5X4G	-	CV1851	-	-
5Y3	-	CV1854	-	5AZ4 5Y4 80
5Y3G	-	CV1268	-	-
5Y3GT	-	CV1856 VT197A x/	-	-
5Y3WGTA	-	CV4027	-	-
5Y4	-	-	-	5AZ4 5Y3 80
5Y4G	-	CV1857	-	-
5Z3	-	CV1861 VT145 x/	-	5U4 5X4
5Z4	-	CV1864 VT74 x/	-	-
5Z4G	-	CV1863	-	-
5Z4GT	-	CV2748	-	-
6AL5	EAA91 EB91	CV140 CV283 CV2004 CV2005 CV2882	3AL5 12AL5	-
6AU4	-	-	19AU4	-
6AX4	-	-	12AX4 25AX4	-
6AX6	-	-	50AX6	-
-6CA4-	EZ81	-	-	-

				
6H6	-	CV1301 CV1930 VT90	7A6 12H6	7A6
6H6G	-	ARDD3 VT90A x/	-	-
6H6GT	-	CV1929 CV1931	-	-
-6R3-	EY81	CV1931	PY81	-
-6S2-	EY86/87	-	-	-
-6U3-	EY80	-	-	-
-6V4-	EZ80	-	-	EZ40
6W4	-	CV732 x/	25W4	-
6W5G	-	VT196 x/	-	-
-6X2-	EY51	-	-	-
6X4	EZ90	CV493	12X4	-
6X4W	-	CV2844	-	-
6X5	-	CV573 VT126 x/	-	-
6X5G	-	CV572 x/	-	-
6X5GT	-	VT126A x/	-	-
6Y3GT	-	CV574	-	-
6Z4	84	CV1816	-	-
6ZY5G	-	CV873	-	-
7A6	-	CV876	6H6 12H6	6H6 12H6
7Y4	-	CV901	14Y4	-
7Z4	-	CV1790 VT181 x/	-	-
10D1	-	CV1300	-	-
12AL5	-	-	3AL5 6AL5 EAA91 EB91	-
12AX4	-	-	6AX4 25AX4	-
12H6	-	CV916 x/	6H6	-
12X4	-	VT214 x/	7A6	7A6
14Y4	-	-	6X4 EZ90	-
-17Z3-	PY81	-	7Y4	-
19AU4	-	-	6AU4	-
-19X3-	PY80	-	-	-
-19Y3-	PY82	-	-	-
25AX4	-	-	6AX4 12AX4	-
25W4	-	-	6W4	-
25Y5	-	CV942	-	-
25Z5	-	CV555	-	25Z6
25Z6	-	CV558	50Y6	25Z5
25Z6GT	-	CV559	-	-
35Y4	-	-	-	35Z5
35Z3	-	CV564 CV565 CV726	-	-
35Z5	-	CV567	-	35Y4
35Z5GT	-	CV568	-	-
50AX6	-	-	6AX6	-
50Y6	-	CV805	25Z6	-

x) American VT

				
72	-	CV709 CV2542	-	-
80	-	CV617 VT80 x/	-	5AZ4 5Y4
82	-	CV1773	-	-
83	-	CV618	-	-
83V	-	CV2547 VT83 x/	-	5V4
84	6Z4	CV619 CV2548	-	-
117Z6GT	-	CV2558	-	-
1561	-	CV1289 CV2644	-	-
1805	-	-	AZ1 AZ11 AZ31	AZ1 AZ11 AZ31
9006	-	CV2769	-	-
AB2	-	-	CB2	-
AZ1	-	CV2860	1805	1805 AZ11 AZ31
-AZ2-	-	CV2861	-	-
AZ3	-	-	-	AZ33
AZ4	-	-	-	AZ12
AZ11	-	-	1805	1805 AZ1 AZ31
AZ12	-	-	-	AZ4
AZ31	-	CV2862	1805	1805 AZ1 AZ11
AZ33	-	-	-	AZ3
AZ41	-	CV3892	-	-
AZ50	-	CV1264	-	-
CB2	-	-	AB2	-
CY1	-	-	-	CY31
CY2	-	-	-	CY32
CY31	-	CV1402	-	CY1
CY32	-	-	-	CY2
DA90	1A3	-	-	-
DY30	1B3	-	-	-
DY86/87	1S2	-	-	-
EA50	-2B35-	CV375 CV1092 VR92	-	-
EAA91	EB91 6AL5	-	3AL5 12AL5	-
EB4	-	-	-	EB34
EB34	-	ARDD5 CV1054 VR54	-	EB4
EB41	-	CV3881	UB41	-
EB91	EAA91 6AL5	-	3AL5 12AL5	-
EY51	-6X2-	CV426	-	-
EY80	-6U3-	-	PY80	-
EY81	-6R3-	-	PY81	-
EY84	-	CV2235	-	-
EY86/87	-6S2-	-	-	-
EY91	-	CV135	-	-
EZ1	-	-	EZ11	EZ41

x) American VT

	=			
EZ3	-	-	EZ12	EZ12
EZ11	-	-	EZ1	EZ41
EZ12	-	-	EZ3	EZ3
EZ22	-	CV346	-	-
EZ40	-	CV3891	-	-6V4- EZ80
EZ41	-	-	EZ11	EZ1 EZ11
EZ80	-6V4-	-	-	EZ40
EZ81	-6CA4-	-	-	-
EZ90	6X4	-	12X4	-
GZ32	-	CV378 CV593	-	-
KB2	-	CV3515	-	-
PY80	-19X3-	-	-	-
FY81	-17Z3-	-	-	-
FY82	-19Y3-	-	-	-
UB41	-	-	EB41	-
UY1N	-	-	-	UY11 UY21
UY11	-	-	-	UY1N UY21
UY21	-	-	-	UY1N UY11
UY82	-	-	PY82 -19Y3-	-